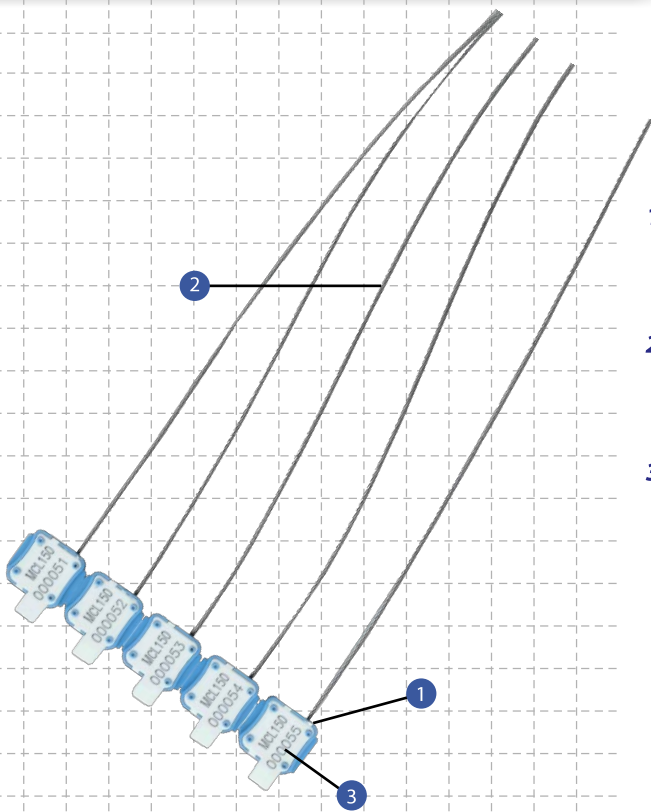


Mini Cable Lock 150

PREVENTION. PROTECTION. PEACE OF MIND.

indicative seal



Affordable, Pull-tight Plastic Cable Seal.

1. The MCL 150 seal is made of high impact ABS plastic material. The base is available in various colours and is ultrasonically welded to the white cap.
2. The MCL 150 can only be removed by a strong cable cutter. Once cut the cable will splay, increasing security.
3. The MCL 150 caps are etched with permanent laser marking for name, logo, sequential numbers, and barcode. Laser marking offers the highest level of security as it cannot be removed or replaced.

Specifications

Product	Material	Cable Length	Cable Diameter	Pull Strength	Marking Area	Max Marking Digits
MCL 150	ABS body & cap with galvanized steel wire rope	180mm	Ø 1.5mm	100kg	Cap: 13mm x 10mm	8

Standard Colours blue, white, green, orange, red & yellow (with white cap only)

INNER CARTON

Carton Quantity	Dimensions	Weight kg/carton	Volume m ³ /carton
1,000	300mm x 270mm x 160mm	5.1	0.01296

OUTER CARTON

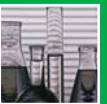
Carton Quantity	Dimensions	Weight kg/carton	Volume m ³ /carton
18,000	930mm x 800mm x 340mm	93	0.25296

Cost-effective Cable Seal

The MCL 150 is a variable length cable seal providing security through its unique locking mechanism and cable design.

It can be used to secure all types of goods in transit. The flexible design makes it suitable for most applications.

Be assured of better security with our innovative use of materials and industrial design.



- AFRICA ■
- AUSTRALIA ■
- CHINA ■
- DENMARK ■
- FRANCE ■
- HONG KONG ■
- HUNGARY ■
- INDONESIA ■
- JAPAN ■
- MALAYSIA ■
- NEW ZEALAND ■
- PHILIPPINES ■
- SINGAPORE ■
- TAIWAN ■
- THAILAND ■
- UK ■
- USA ■

© 2010 MegaFortris. All rights reserved. Reproduction in whole or in part without written permission is prohibited. Products and names of products described here are trade names of the MegaFortris group of companies. Features and specifications are subject to change without notice as MegaFortris products undergo constant development.

