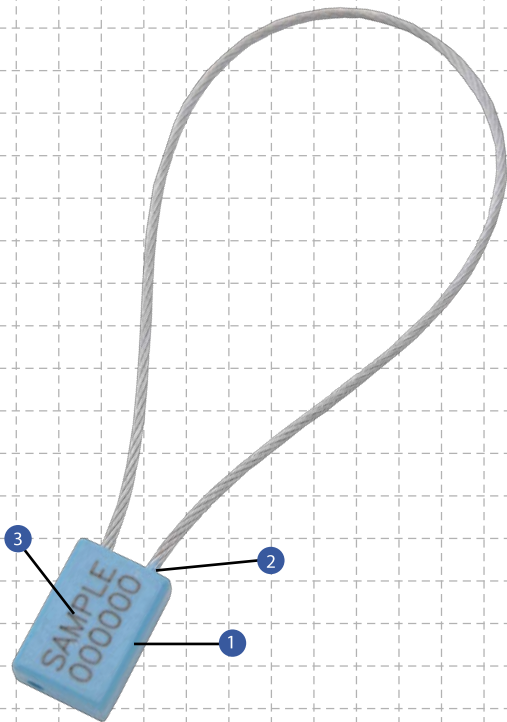
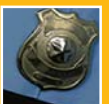
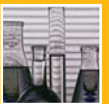


Mini Cable Lock 180

PREVENTION. PROTECTION. PEACE OF MIND.

Security seal



Affordable, Pull-tight Plastic Cable Seal

1. Moulded with a high-impact ABS material with a galvanized steel wire rope. The high-resilient ABS material does not break easily but will clearly show evidence of tampering.
2. One end of the cable is permanently secured into the locking body.
3. The Mini Cable Lock 180 is etched with permanent laser marking for name, logo, sequential numbers and barcode. Laser marking offers the highest level of security as it cannot be removed or replaced.

Specifications

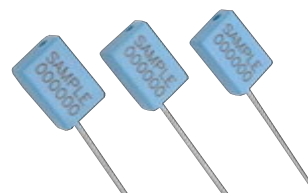
Product	Material	Cable Length	Cable Diameter	Pull Strength	Marking Area	Max Marking Digits	
MCL 180	ABS moulded body with galvanized steel wire rope	180mm	Ø 1.8 mm	300kg	Body: 19mm x 12mm	6	
INNER CARTON		OUTER CARTON					
Quantity	Dimensions	Weight kg/carton	Volume m ³ /carton	Quantity	Dimensions	Weight kg/carton	Volume m ³ /carton
500 pcs	300mm x 280mm x 170mm	4.9	0.01428	9,000 pcs	930mm x 860mm x 340mm	91.86	0.27193

Standard Colours blue, green, red, orange, white & yellow

Cost-effective Cable Seal

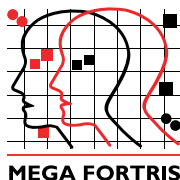
The Mini Cable Lock 180 are very user-friendly and highly tamper evident. This seal can be applied to secure various applications for a range of security requirements.

Mini Cable Lock 180 are widely used on trucks, tanker trucks, air cargo containers, shipping containers, rail cars, calibrators and valves.



Be assured of better security with our innovative use of materials and industrial design.

© 2010 MegaFortris. All rights reserved. Reproduction in whole or in part without written permission is prohibited. Products and names of products described here are trade names of the MegaFortris group of companies. Features and specifications are subject to change without notice as MegaFortris products undergo constant development.



- AFRICA ■
- AUSTRALIA □
- CHINA ■
- DENMARK □
- FRANCE □
- HONG KONG □
- HUNGARY ■
- INDONESIA □
- JAPAN □
- MALAYSIA □
- NEW ZEALAND ■
- PHILIPPINES □
- SINGAPORE ■
- TAIWAN □
- THAILAND ■
- UK □
- USA ■