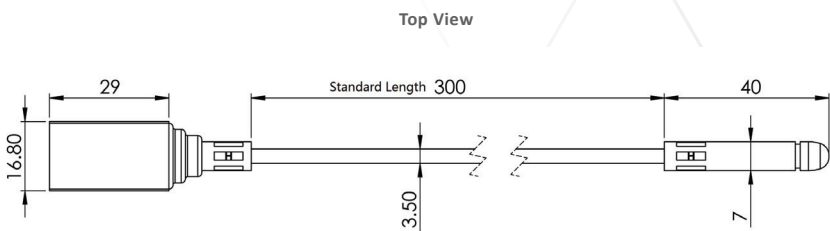
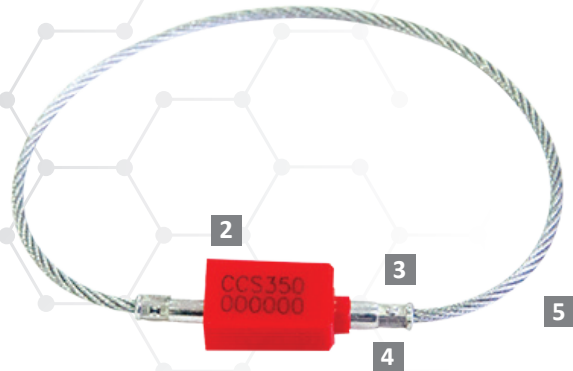


High Security Seal · Data Sheet

Carrier Cable Seal (CCS)



Pull-Tight Barrier Seal

Features

- 1 The Carrier Cable Seal 350 is a strong and durable seal designed especially for high security applications.
- 2 The body is molded with high-impact ABS.
- 3 One end of the cable is permanently secured via crimping technology which cannot be removed without cutting the cable. The metal locking mechanism embedded inside the metal bush provides effective locking strength and prevents easy tampering.
- 4 The high strength steel bush and pin provides added security. The non-preformed galvanized steel wire used will also fray upon cutting, showing clear evidence of tampering.
- 5 The Carrier Cable Seal is etched with irreversible and permanent laser marking for name, logo, sequential number and barcodes.

Technical Specifications

PRODUCT- CARRIER CABLE SEAL

Code	Material	Cable Length	Cable Diameter	Tensile Strength	Marking Area	Max Marking Digits
CCS	Body : ABS Cable : GSW	310 mm (12.21 in)	Ø 3.5 mm (0.138 in)	1300 kg (2866.0 lb)	Body : 26 x 12 mm (1..02 x 0.47 in)	Serial no : 8

PACKAGING

	Quantity	Dimensions (mm)	Gross Weight kg	Volume m ³
Inner Carton	150	300 x 270 x 160 (11.8 x 10.62 x 6.3 in)	7.24 (15.96 lbs)	0.01296 (0.458 cu.ft.)
Outer Carton	2700	930 x 860 x 360 (36.6 x 33.9 x 14.17 in)	130.30 (286.6 lbs)	0.28793 (10.168 cu.ft.)

Standard Colours					
PS.RED	PS.BLUE	PS.YELLOW	PS.GREEN	PS.ORANGE	PS.WHITE



FMM EXCELLENCE AWARD 2012
QUEST FOR CONTINUOUS IMPROVEMENT
BEST MANUFACTURER IN MALAYSIA IN 2012

UPDATED : 1 JUNE 2020