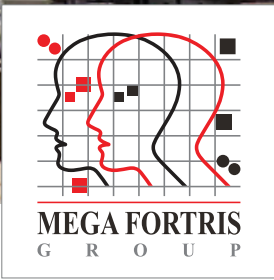


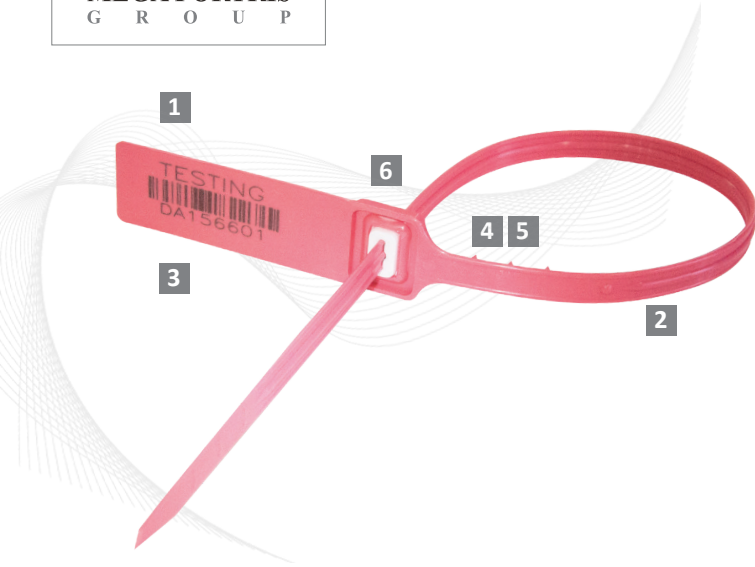


This product available in **biodegradable alternatives**.



Indicative Seal · Data Sheet

# Fort CBS (FCBS)



## Strong Pull-Tight Seal With Metal Locking

The Fort CBS is a strong and durable indicative seal that has been designed for the transportation of high value cash-in-transit and goods.

Its durable and versatile features also make it suitable for universal use with other applications: postal services, airline cargos, warehouses, oil and gas, chemical and pharmaceutical industries, and many more.

### Features

- 1** The Fort CBS is a strong and durable seal designed for greater strength and longer length requirements. The large flap area allows for ample marking space.
- 2** The locking ribs on both sides and in the middle of the thick strap provide better security.
- 3** The Fort CBS is etched with permanent laser marking for name, logo, sequential number and barcodes. Laser marking provides the highest level of security as it cannot be removed or replaced.
- 4** The embedded spikes at the back of the seal also provide a better strapping grip on bags / other slippery materials.
- 5** The mini ribs along the locking strap provides greater grip during locking.
- 6** Heat staking is used to permanently fix the cap to the seal. Heat staked parts cannot be cut or forced open without leaving clear tamper evidence.
- 7** Optional- **Biodegradable** additive can be added upon customers' requirement, securing strap gives V the user a choice of strength to match different applications.

### Technical Specifications

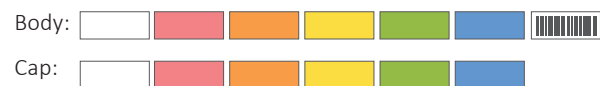
#### PRODUCT - Fort CBS (FCBS)

Product	Material	Locking Length	Strap Dimensions	Pull Strength	Marking Area	Max Marking Digits
FCBS 30	Polypropylene	300 mm	2.5 x 8.0 mm	45 kg	Flap: 55 x 20 mm	14
FCBS 38	Polypropylene	380 mm	2.5 x 8.0 mm	45 kg	Flap: 55 x 20 mm	14

#### INNER CARTON

	Carton Quantity	Dimensions mm	Weight kg/carton	Volume m <sup>3</sup> /carton
FCBS 30	1,000	615 x 280 x 300	6.79	0.03195
FCBS 38	1,000	618 x 262 x 231	7.50	0.03722

#### Standard Colours



UPDATED : 28 JULY 2020