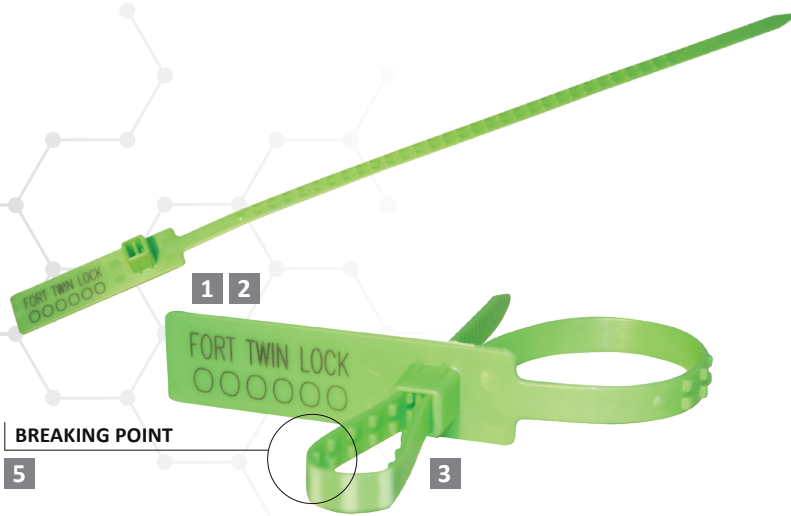
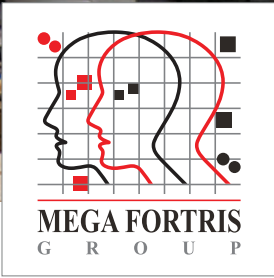




This product available in **biodegradable alternatives**.

Indicative Seal · Data Sheet

Fort Twin Lock (FTL)



Double-Locking Plastic, Pull-Tight Seal

A versatile pull-tight seal, the Fort Twin Lock is a strong seal despite its small dimensions. The innovative double-locking mechanism provides extra security when sealing.

Available in polypropylene (PP), the Fort Twin Lock seal is suitable for a variety of applications that focus on tagging such as sealing bags, documents, and goods-in-transit.

Features

- 1 The Fort Twin Lock seal is etched with permanent laser marking for security and easy identification.
- 2 Laser marking offers the highest level of security as it cannot be removed or replaced without showing clear signs of tampering.
- 3 The long marking flap allows for barcode markings, standard text, logos and alphanumeric serial numbers.
- 4 Includes a double-locking mechanism to provide additional security.
- 5 The breaking point is located at the strap's ribs, allowing for visible tamper evidence and easy removal upon application.
- 6 Optional- **Biodegradable** additive can be added upon customers' requirement, securing strap gives the user a choice of strength to match different applications.

Technical Specifications

PRODUCT - Fort Twin Lock (FTL)

Material	Locking Size / Total Length	Tensile Strength	Marking Area	Max Marking Digits
Polypropylene (PP)	327.5 x 6.8 x 1.1 mm (12.89 x 0.27 x 0.04 in)	18 kgf (39.7 lbf)	Flap: 14 x 35 mm (0.55 x 1.38 in)	Serial no: 10 Barcode: 8

OUTER CARTON

Carton Quantity	Dimensions	Weight kg/carton	Volume m ³ /carton	Standard Colours
1000 pcs	454 x 234 x 284 mm (17.87 x 9.21 x 11.18 in)	4.32 kgs (9.52 lbf)	0.03017 m ³ (1.06544 ft ³)	



FMM EXCELLENCE AWARD 2012
QUEST FOR CONTINUOUS IMPROVEMENT
BEST MANUFACTURER IN MALAYSIA IN 2012

UPDATED : 29 JULY 2020