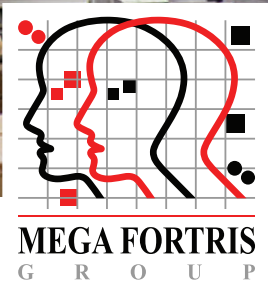


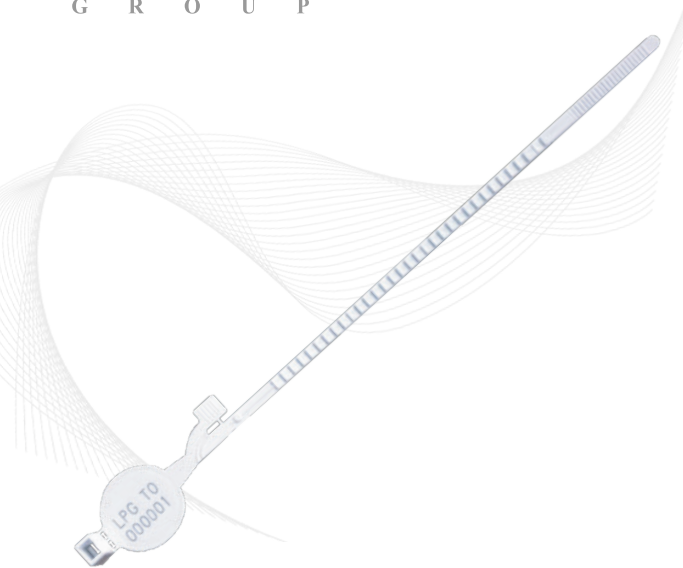


This product available in **biodegradable alternatives**.



Indicative Seal · Data Sheet

# Gasul LPG



## Strong Indicative Gas Valve Seal

The Gasul LPG is a solid, user-friendly gas valve seal that protects against tampering with the gas cylinder and gas pilferage.

While being easy to apply by simply inserting the seal's tail through a designated hole next to the cap, the seal requires tools for removal, leaving clear tamper evidence.

The seal is designed with a staggered locking mechanism within the cover that secures the seal on a valve upon application.

### Features

- 1 The staggered locking mechanism provides secure locking even if sudden, assertive force is applied after sealing.
- 2 Finger grips at the end of the tail enable easy locking under any conditions.
- 3 When the seal is tightened, the grip on the gas valve is secure with minimal loop.
- 4 Standard markings for the Gasul LPG include serial numbers, customer names and/or logos. The Gasul LPG seal is etched with permanent laser marking. Laser marking offers the highest level of security as it cannot be removed or replaced.
- 5 Full fitted gas cap to cover gas valves.
- 6 Optional- **Biodegradable** additive can be added upon customers' requirement, securing strap gives the user a choice of strength to match different applications.

### Technical Specifications

#### PRODUCT

Product	Material	Strap Dimensions	Tensile Strength	Marking Area	Max Marking Digits
Gasul LPG	Body: LDPE + HDPE	234 mm	15 kgs	Flap: 12 x 20mm	8

#### INNER CARTON

	Carton Quantity	Dimensions	Weight kg/carton	Volume m <sup>3</sup> /carton	Standard Colours
Gasul LPG	1,000 pcs	480 x 330 x 280 mm	4.75	0.04356	



**FMM EXCELLENCE AWARD 2012**  
QUEST FOR CONTINUOUS IMPROVEMENT  
BEST MANUFACTURER IN MALAYSIA IN 2012

UPDATED : 11 AUGUST 2020