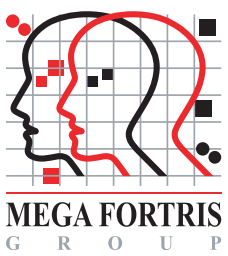


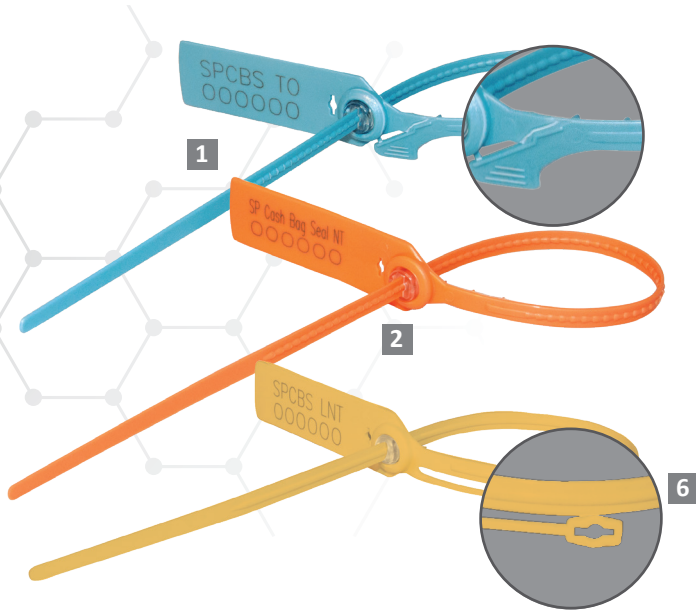


This product available in **biodegradable alternatives**.



Indicative Seal · Data Sheet

# SP Cash Bag Seal (SPCBS)



## Indicative Security Seal With Metal Locking

The SP Cash Bag Seal is so named for its primary sealing applications for the effective securing of cash-in-transit. It is also versatile enough for additional applications across sectors to secure the transportation of high-value goods.

The typical applications for this universal bag seal include sacks or bags designed for high-value goods transportation in numerous industries: finance, airline cargo management, postal services, clinical waste management, courier services and cash-in-transit.

## Indicative Flat Stem Pull Tight Seal

### Features

- 1 The SP Cash Bag seals are etched with permanent laser marking. Laser marking offers the highest level of security as it cannot be removed and replaced.
- 2 Heat staking is used to fasten caps to the seals. Heat staking is too strong to be cut or forced open without leaving clear evidence of tampering.
- 3 Metal clip locking provides better locking and greater pull strength to the long, thick strap.
- 4 Double-sided locking teeth on the middle of the strap provide greater security.
- 5 The SP Cash Bag seals come with tear off with no spike to adhere to specific customer requirements. The additional indicative feature provides convenience and operation efficiency.
- 6 Alternative- Eco-friendly security seal with added Biodegradable plastic additive. It enhances the ability of plastic to degrade by microorganisms in landfills, anaerobic digestion systems and aerobic facilities.  
*\*without changing any technical properties of the seal.*

## Technical Specifications

### PRODUCT - SP CASH BAG SEAL

Product	Material	Locking Length	Strap Dimensions	Tensile Strength	Marking Area	Max Marking Digits
SPCBS NT	<b>Body:</b> PP & Biodegradable	240 mm	6 mm	27 / 31 kgf	18 x 50 mm	<b>Serial no</b> : 10
SPCBS TO	<b>Metal Jaw:</b> SS304	(13.4 in)	(0.27 x 0.007 in)	(59.5 / 68.3 lbf)	(0.71 x 1.96 in)	<b>Barcode no</b> : 11
SPCBS LNT	<b>Cap:</b> PP & Biodegradable					
SPCBS LTO						

### PACKAGING

Inner Carton	Quantity	Dimensions (mm) (17.7 x 9.84 x 10.2 in)	Gross Weight kg (8.49 lbs)	Volume m <sup>3</sup> (1.033 cu.ft.)	Standard Colours							
					Body	Cap	RED	BLUE	ORANGE	YELLOW	GREEN	WHITE
					TRANS	Milky						

### KEY APPLICATIONS

- ✓ Bags
- ✓ Retail Applications
- ✓ Courier
- ✓ Goods-in-transit
- ✓ Postal
- ✓ Banking

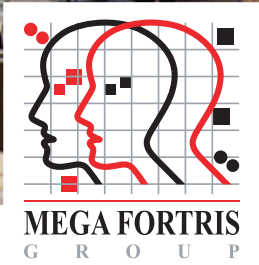


**FMM EXCELLENCE AWARD 2012**  
QUEST FOR CONTINUOUS IMPROVEMENT  
BEST MANUFACTURER IN MALAYSIA IN 2012

UPDATED : 21 AUGUST 2020



This product available in **biodegradable alternatives**.



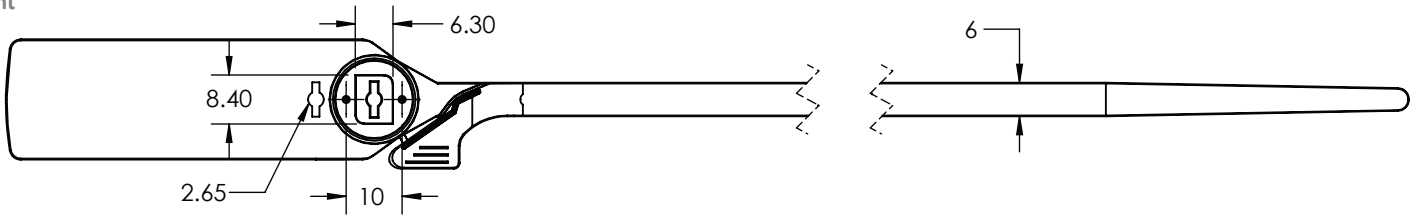
Indicative Seal · Data Sheet

# SP Cash Bag Seal (SPCBS)

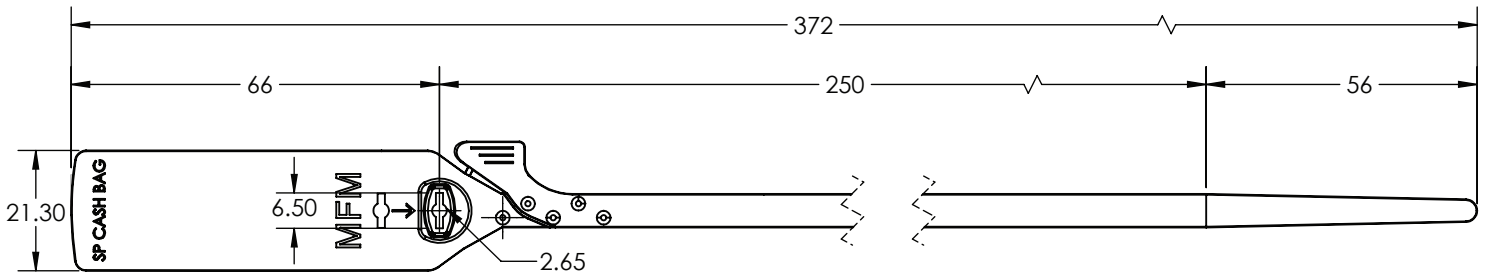
## MEASUREMENT

### SPCBS TO

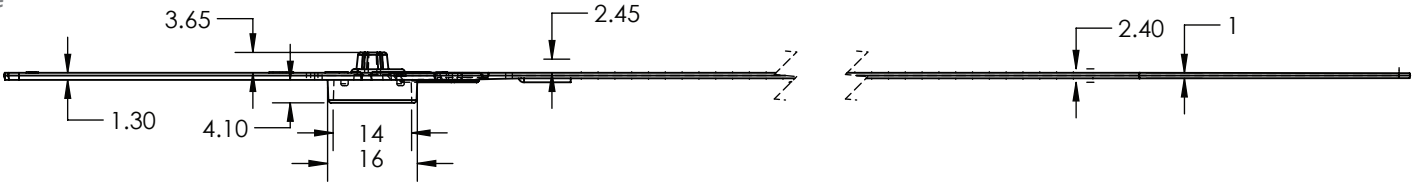
Front



Back



Side



**FMM EXCELLENCE AWARD 2012**  
QUEST FOR CONTINUOUS IMPROVEMENT  
BEST MANUFACTURER IN MALAYSIA IN 2012

UPDATED : 21 AUGUST 2020