

MEGA FORTRIS
G R O U P

SECURITY SEAL

MINI CABLE BREAKAWAY 250 (MCB 250)

Pull-Tight Barrier Seal

Economical and feasible seal for security.

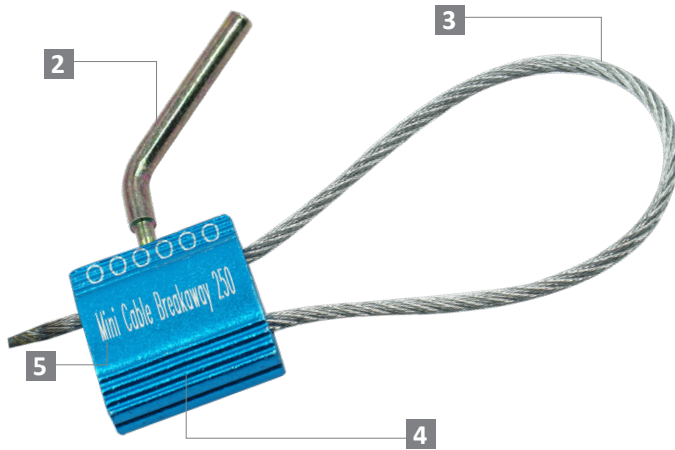
Mini Cable Breakaway 250 features a special shear bolt locking mechanism where its shaft will break when it is tightened to secure the asset. It is highly affordable and it does not compromise security. The design is simple and light for any security application.

Applications:

- Valve Sealing
- Retail Applications
- Logistics
- Banking

PREVENTION · PROTECTION · PEACE OF MIND





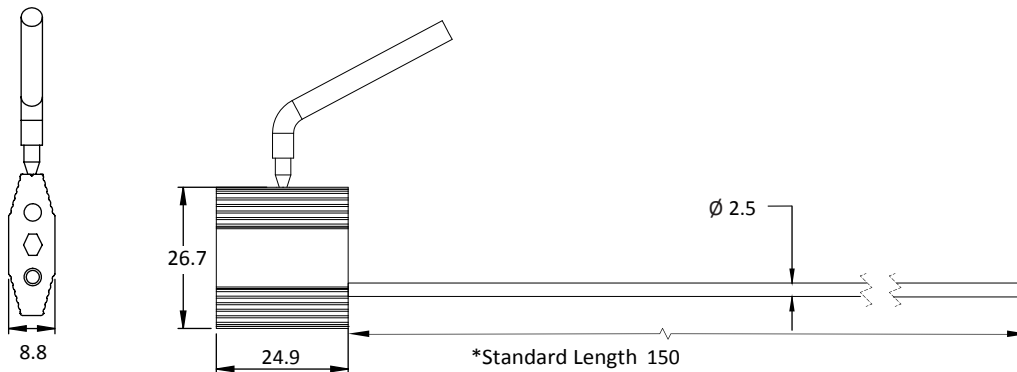
LASER MARKING OPTION



VIEW APPLICATION GIF



- 1 The Mini Cable Breakaway 250 is designed to guarantee cost-effectiveness and security.
- 2 The external locking mechanism of this seal consists of a shear bolt that breaks away when the cable is tightly secured in the body.
- 3 The non-preformed galvanised steel wire unravels upon cutting, hence showing clear evidence of tampering.
- 4 The rib exterior is designed to protect laser markings during rough handling with anodisation of solid colour for colour coding.
- 5 Irreversible identifiers such as name, logo, barcode, serial number and QR code are laser-marked on the aluminium body.



TECHNICAL SPECIFICATIONS

*Customisable cable length upon request.

PRODUCT - MINI CABLE BREAKAWAY 250 (MCB 250)

	Material	Cable Length	Cable Diameter	Tensile Strength	Marking Area	Max Marking Digits
Code MCB 250	Body : Aluminium Cable : Galvanised Steel Wire	150 mm (5.9 in)	Ø 2.5 mm (0.1 in)	≥300 kgf (≥661.4 lbf)	21 x 10 mm (0.8 x 0.4 in)	Serial no : 6 Barcode : 6

PACKAGING

Carton	Quantity	Dimensions (mm)	Gross Weight (kg)	Volume (m ³)	Standard Colours
Inner	500	300 x 270 x 160 (11.8 x 10.6 x 6.3)	11.11 (24.5 lb)	0.013 (0.5 cu.ft.)	Body : G R B BK GD SC For colour customisations, kindly contact us for further information.

Carton size and weight vary according to cable length. Figures shown in the table are for the standard cable length packaging. Please contact us for additional details.

Updated Date : 17 August 2021