

MEGA FORTRIS
G R O U P

INDICATIVE SEAL

MEGA ARROW SEAL (ARW)

Fixed Length Seal

Inspection window and ribbed surface for instantaneous security inspection.

Mega Arrow Seal features an inspection window and contrasting colour locking mechanism for rapid security inspection. The ribbed surface on the strap provides better grip and quick sealing to ease the operation. Additional security breaking lines are designed for clear evidence of tampering.

Applications:

- Retail Applications
- Chemical and Oil Refinery
- Warehousing and Logistics
- F&B Applications

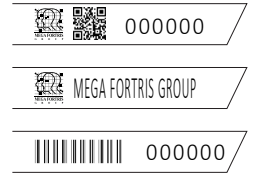


PREVENTION · PROTECTION · PEACE OF MIND





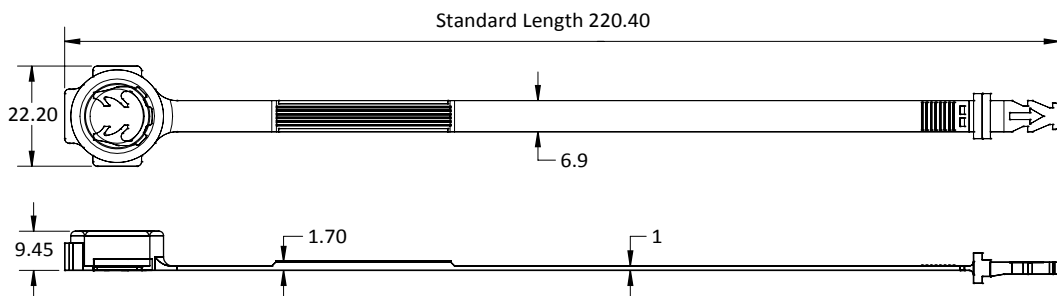
LASER MARKING OPTION



VIEW APPLICATION GIF



- 1 The Mega Arrow Seal is moulded with Polypropylene (PP) material with an inspection window ultrasonically welded to its base for clear visual of locking and evidence of tampering.
- 2 One-way double locking mechanism is embedded for fast and easy application.
- 3 Colour-contrast locking insert to prevent tampering and provide better security inspection.
- 4 The strap and breaking point are designed with additional security breaking lines for easy removal and to clearly show evidence of tampering.
- 5 Irreversible identifiers such as name, logo, barcode, serial number and QR code are laser-marked on the strap.
- 6 Biodegradable additives for plastic material are available.



TECHNICAL SPECIFICATIONS

PRODUCT - MEGA ARROW SEAL (ARW)						
Code	Material	Locking Length	Locking Size	Tensile Strength	Marking Area	Max Marking Digits
ARW	Plastic : Polypropylene (PP) Temperature Range: -5°C to 80°C	201 mm (8 in)	6.9 mm (0.3 in)	>20 kgf (>44.1 lbf)	21 x 51 mm (0.8 x 2.0 in)	Serial no : 10 Barcode : 9

PACKAGING					
Carton	Quantity	Dimensions (mm)	Gross Weight (kg)	Volume (m ³)	Standard Pastel Colours
Inner	1000	338 x 255 x 190 (13.3 x 10.0 x 7.5 in)	4.98 (11 lb)	0.016 (0.6 cu.ft.)	Body : WH PSYL PSOR PSRD PSBL PSGN Cap : TRNS

For colour customisations, kindly contact us for further information.

Updated Date : 17 August 2021