

**MEGA FORTRIS**  
G R O U P

## **INDICATIVE SEAL**

# **SIMULOCK NEW VERSION (SSNV) & SIMULOCK (SSN)**

**Fixed Length Seal**

***Ring-shaped structure and inspection window for quick and easy inspection and security.***

Simulock is the first seal ever produced in Mega Fortris. With a long history of design and development, it now comes with an improved inspection window and neat design for quick sealing and easy inspection. Two versions of Simulock are available with two types of materials to accommodate the application and security.

#### **Applications:**

- Retail Applications
- Chemical and Oil Refinery
- Warehousing and Logistics
- F&B Applications



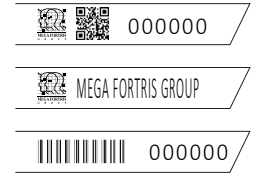
**PREVENTION · PROTECTION · PEACE OF MIND**



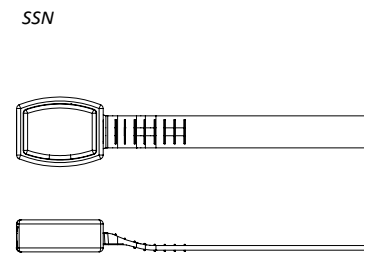
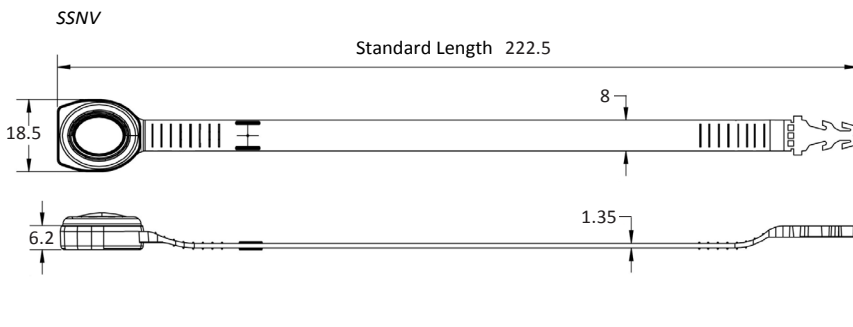


- 1 The Simulock is moulded with Polypropylene (PP) or Nylon (NY) material with an inspection window ultrasonically welded to its base for clear visual of locking and evidence of tampering.
- 2 One-way double locking mechanisms are embedded for easy application and prevent tampering.
- 3 The strap and breaking point are designed with additional security breaking lines for easy removal and clear evidence of tampering.
- 4 Two versions of Simulock available for different shapes of inspection window and tensile strength.
- 5 Biodegradable additives for plastic material are available.

LASER MARKING OPTION



VIEW APPLICATION GIF



TECHNICAL SPECIFICATIONS

PRODUCT - SIMULOCK NEW VERSION (SSNV) & SIMULOCK (SSN)

Code	Material	Locking Length	Locking Size	Tensile Strength	Marking Area	Max Marking Digits
SSNV	<b>Plastic :</b> Polypropylene (PP) Temperature Range: -5°C to 80°C	184.4 mm (7.3 in)	8 mm (0.3 in)	>25 kgf (>55.1 lbf)	6.0 x 120 mm (0.2 x 4.7 in)	<b>Serial no : 10</b> <b>Barcode : 9</b>
SSN	<b>Plastic :</b> Nylon (NY) Temperature Range: -20°C to 80°C			>35 kgf (>77.2 lbf)	6.0 x 150 mm (0.2 x 5.9 in)	

PACKAGING

Carton	Quantity	Dimensions (mm)	Gross Weight (kg)	Volume (m³)	Standard Pastel Colours
SSNV Inner	1000	338 x 255 x 190 (13.3 x 10 x 7.5 in)	4.35 (9.6 lb)	0.016 (0.6 cu.ft.)	Body : SSNV <span>WH</span> <span>PSYL</span> <span>PSOR</span> <span>PSRD</span> <span>PSBL</span> <span>PSGN</span> Cap : SSNV <span>TRNS</span>
SSN Inner			4.98 (11 lb)		Body : SSN <span>PTDG</span> Cap : SSN <span>WH</span>

For colour customisations, kindly contact us for further information.

Updated Date : 17 August 2021