

## INDICATIVE SEAL

# MINI FORT SINGLE LOCK (MFSL)

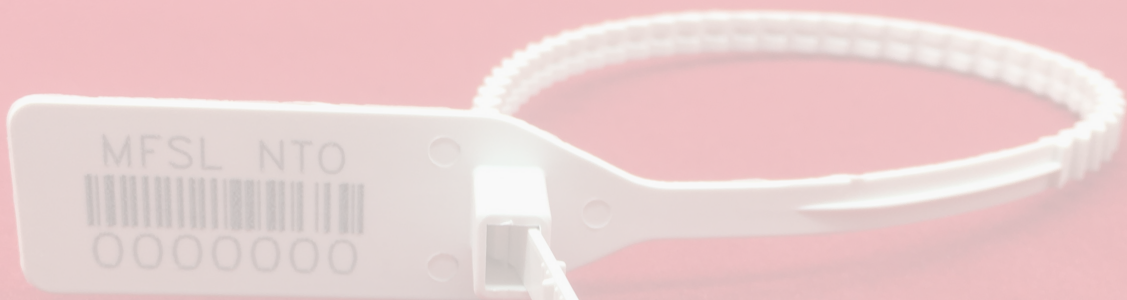
### Pull-Tight Seal

***Comprehensive security feature in a compact structure.***

Mini Fort Single Lock is an indicative plastic seal with comprehensive features for security requirements. It has a double locking mechanism with ribs-structured strap to give clear signs of tamper evidence. It is designed with spikes at the back for better gripping. With a body fully made of plastic material, full decomposition is achievable.

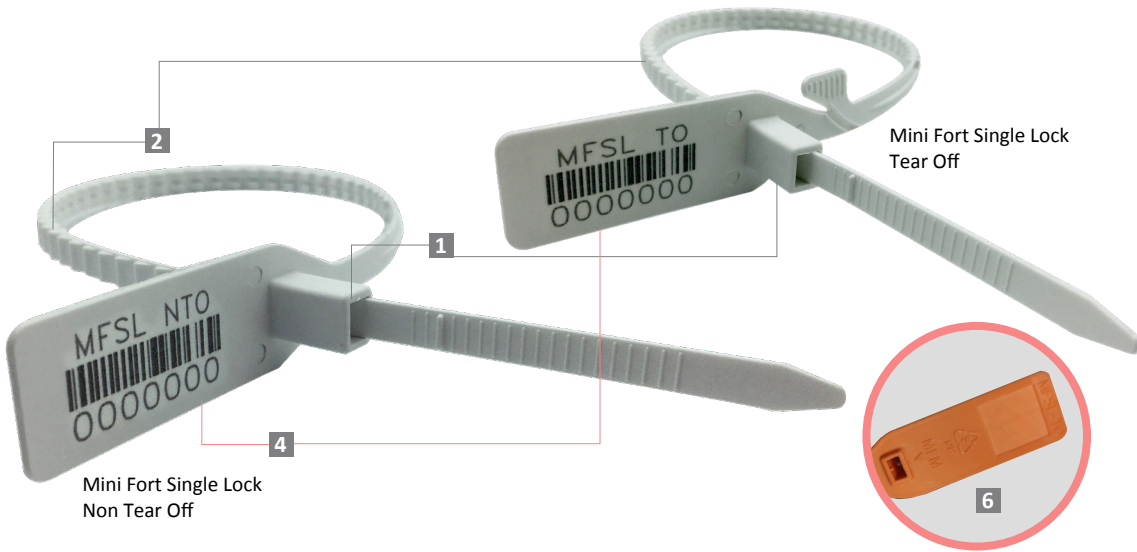
#### Applications:

- Retail Applications
- Postal Services
- Logistics
- Banking

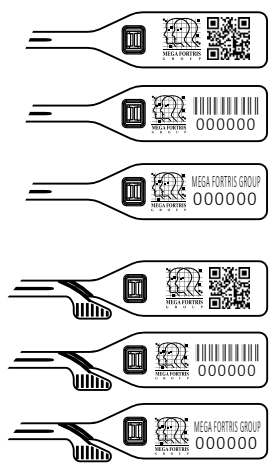


PREVENTION · PROTECTION · PEACE OF MIND





**LASER MARKING OPTION**



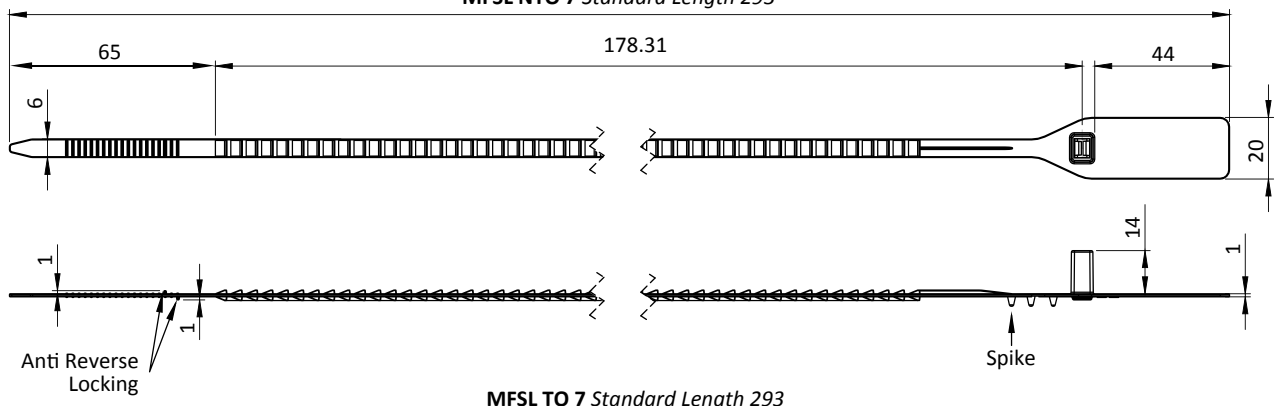
**VIEW APPLICATION GIF**



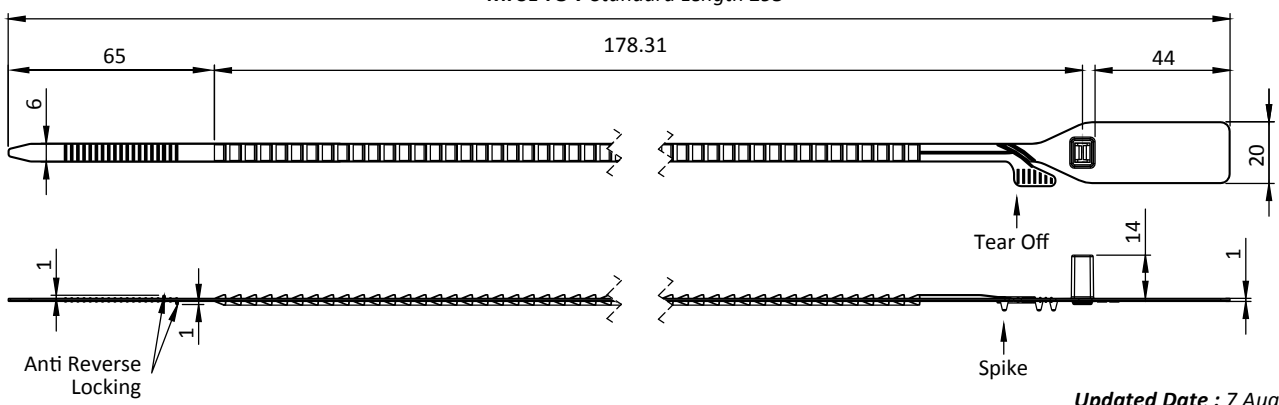
- 1** The Mini Fort Single Lock (NTO & TO ) features a double locking mechanism in its fully Polypropylene (PP) moulded body for added security and durability.
- 2** The locking ribs on the seal provide better grip and stronger endurance during application. Tamper evidence signs are obvious on the strap.
- 3** Spikes are placed behind the seal to provide better grip on the application surface.
- 4** The larger flap allows ample space for identifier marking. Irreversible identifiers such as name, logo, barcode, serial number and QR code are laser-marked on the flap.
- 5** Biodegradable additives for plastic material are available.
- 6** A customize embedded logo back of the seal's flap, upon request.

**Mini Fort Single Lock 7**

**MFSL NTO 7 Standard Length 293**

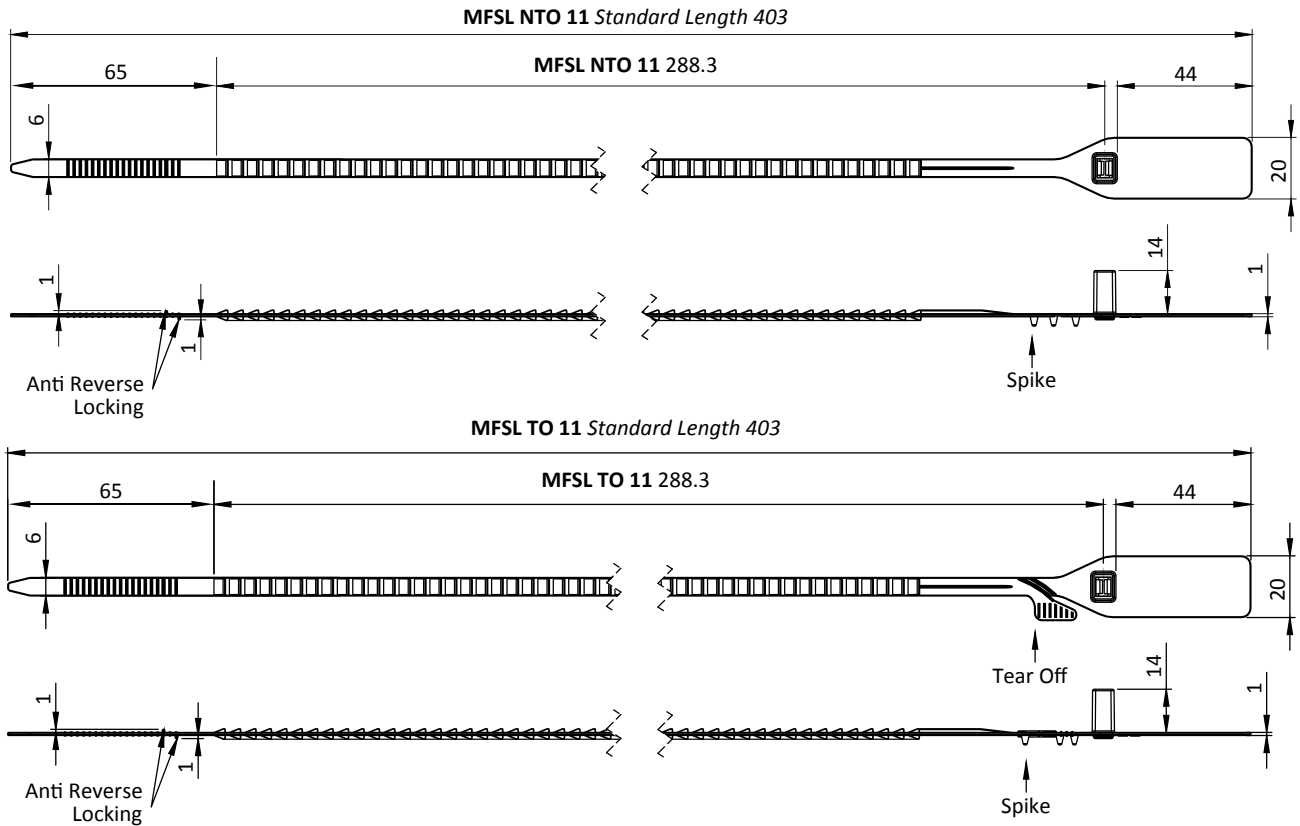


**MFSL TO 7 Standard Length 293**



Updated Date : 7 August 2023

Mini Fort Single Lock 11



TECHNICAL SPECIFICATIONS

PRODUCT - MINI FORT SINGLE LOCK 11 (MFSL 11 NTO)

Code	Material	Locking Length	Locking Size	Tensile Strength	Marking Area	Max Marking Digits
MFSL 7 NTO	Plastic : Polypropylene (PP)	178.3 mm (7 in)	6 mm (0.24 in)	>25 kgf (>55.1 lbf)	16 X 40 mm (0.6 x 1.6 in)	Serial no : 10 Barcode : 10
MFSL 7 TO	Plastic : Polypropylene (PP)	178.3 mm (7 in)	6 mm (0.24 in)	>25 kgf (>55.1 lbf)	16 X 40 mm (0.6 x 1.6 in)	Serial no : 10 Barcode : 10
MFSL 11 NTO	Plastic : Polypropylene (PP)	288.3 mm (11.4 in)	6 mm (0.24 in)	>25 kgf (>55.1 lbf)	16 X 40 mm (0.6 x 1.6 in)	Serial no : 10 Barcode : 10
MFSL 11 TO	Plastic : Polypropylene (PP)	288.3 mm (11.4 in)	6 mm (0.24 in)	>25 kgf (>55.1 lbf)	16 X 40 mm (0.6 x 1.6 in)	Serial no : 10 Barcode : 10

PACKAGING

Carton	Quantity	Dimensions (mm)	Gross Weight (kg)	Volume (m <sup>3</sup> )	Standard Pastel Colours
Inner MFSL 7 NTO MFSL 7 TO	1000	454 x 234 x 284 (17.9 x 9.2 x 11.2 in)	3.62 (7.98 lb)	0.0302 (1.067 cu.ft.)	Body : <input type="checkbox"/> WH <input type="checkbox"/> PSYL <input type="checkbox"/> PSOR <input type="checkbox"/> PSRD <input type="checkbox"/> PSBL <input type="checkbox"/> PSGN <input type="checkbox"/> BK
Inner MFSL 11 NTO MFSL 11 TO		568 x 235 x 210 (22.4 x 9.3 x 8.3 in)	4.98 (10.98 lb)	0.02803 (0.989 cu.ft.)	For colour customisations, kindly contact us for further information.

Updated Date : 7 August 2023