



MEGA FORTRIS
G R O U P

SECURITY SEAL

MINI CABLE LOCK PREMIUM 250 2K (MCLP 250 2K)

Pull-Tight Barrier Seal

All-inclusive premium seal for security requirements.

Mini Cable Lock Premium 250 2K is delicately designed with various tamper-evident features. It is moulded with Mega Fortris' patented two-colour body for improved visibility and to deter tampering attacks. This seal is ISO17712:2013 certified.

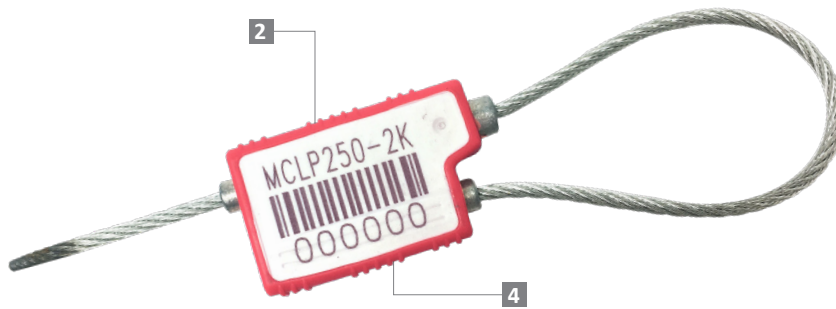
Applications:

- Valve Sealing
- Retail Applications
- Logistics
- Banking



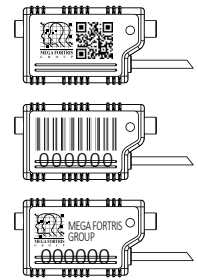
PREVENTION · PROTECTION · PEACE OF MIND



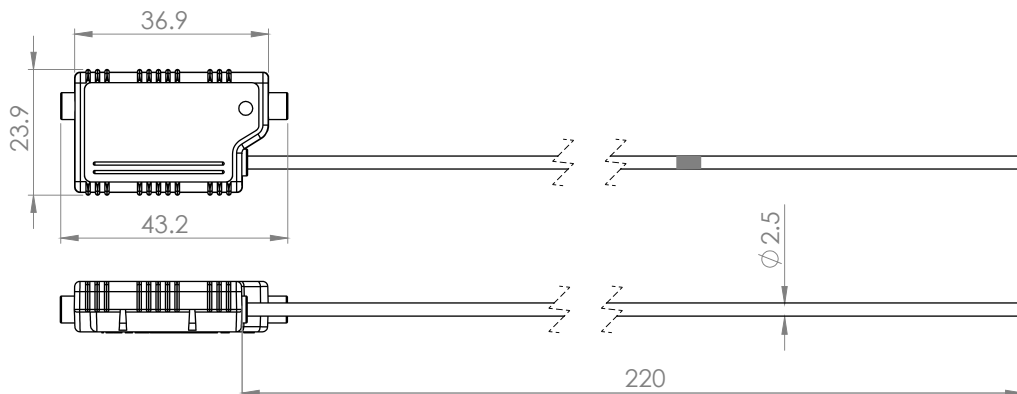


- 1 The Mini Cable Lock Premium 250 2K is moulded in PP material with non-preformed galvanised steel wire to show clear evidence of tampering.
- 2 One-way locking mechanism is embedded for fast and easy application. The additional tips at both ends provide greater protection. Mini Cable Lock Premium 250 2K has a grooved design and features an irregular pattern on the body to prevent tampering and give clear evidence of tampering on the identifier.
- 3 Default rigid body allows for durable usage of the seal while the additional colour on the 2K body improves definition of laser markings, visibility, and identification.
- 4 Irreversible identifiers such as name, logo, barcode, serial number and QR code are laser-marked on the body.
- 5 Biodegradable additives for plastic material are available.
- 6 Plastic material can withstand extreme weather conditions of -20°C to 80°C.
- 7 This seal is certified under the “S” category of ISO17712:2013 Clauses 5 and 6.

LASER MARKING OPTION



VIEW APPLICATION GIF



TECHNICAL SPECIFICATIONS

*Customisable cable length upon request.

PRODUCT - MINI CABLE LOCK PREMIUM 250 2K (MCLP 250 2K)

Code	Material	Cable Length	Cable Diameter	Tensile Strength	Marking Area	Max Marking Digits
MCLP 250 2K	Body : Polypropylene (PP) Marking Flap : Polypropylene (PP) Cable : Galvanized Wire Metal Body : Zinc Cast	220 mm (8.67 in)	Ø2.5 mm (0.098 in)	≥350 kgf (≥771.6 lbf)	18.9 x 28.2 mm (0.75 x 1.11 in)	Serial no : 7 Barcode : 7

PACKAGING

Carton	Quantity	Dimensions (mm)	Gross Weight (kg)	Volume (m ³)	Standard Pastel Colours
MCLP 250 2K Inner	TBC	TBC	TBC	TBC	Body : <input type="checkbox"/> WH <input type="checkbox"/> PSYL <input type="checkbox"/> PSOR <input type="checkbox"/> PSRD <input type="checkbox"/> PSBL <input type="checkbox"/> PSGN <input type="checkbox"/> BLK Marking flap : <input type="checkbox"/> WH

For colour customisations, kindly contact us for further information.

Carton size and weight vary according to cable length. Figures shown in the table are for the standard cable length packaging. Please contact us for additional details.

Updated Date : 27 November 2023