



**MEGA FORTRIS**  
G R O U P

## **INDICATIVE SEAL**

### **FAST SEAL (FSE)**

Pull-Tight Seal

***Versatile security seal for various industry needs.***

Fast Seal is the icon in the indicative family. It offers various options for strap length to complement the different applications. Its slim round strap makes it suitable for small hole latches. This is the most versatile choice for security and authentication purposes.

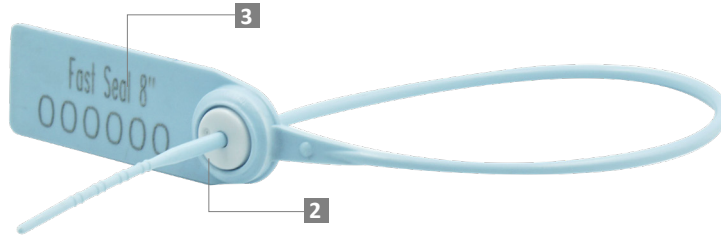
#### **Applications:**

- Retail Applications
- Authentication Tagging
- Logistics
- Banking



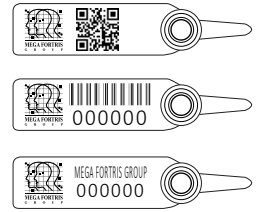
**PREVENTION · PROTECTION · PEACE OF MIND**



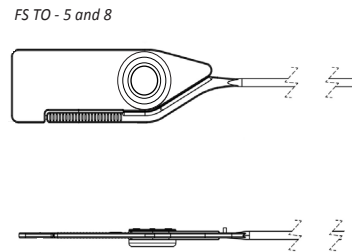
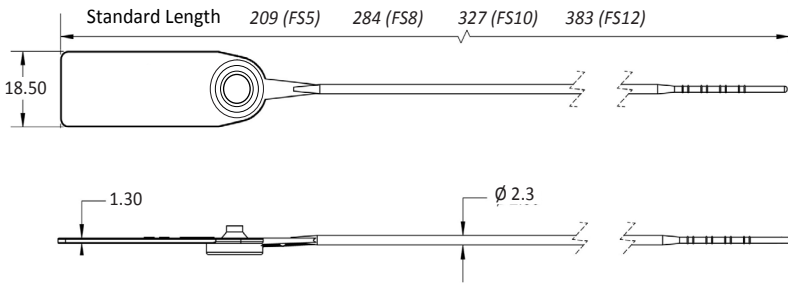


- 1** The Fast Seal is moulded with Polypropylene (PP) or high-impact Nylon (NY) material with the metal lock heat staking encapsulated for greater security and clear evidence of tampering.
- 2** One-way locking mechanism is embedded for fast and easy application.
- 3** Irreversible identifiers such as name, logo, barcode, serial number and QR code are laser-marked on the flap.
- 4** Biodegradable additives for plastic material are available.
- 5** Different strap lengths are available to cater to different applications.
- 6** Tear-off (TO) variation available in 5" and 8" for easy removal.

**LASER MARKING OPTION**



**VIEW APPLICATION GIF**



**TECHNICAL SPECIFICATIONS**

**PRODUCT - FAST SEAL (FSE)**

| Code         | Material   | Locking Length    | Locking Size         | Tensile Strength   | Marking Area                 | Max Marking Digits                           |
|--------------|--|-------------------|----------------------|--|------------------------------|--|
| <b>FSE5</b>  | <b>Plastic :</b><br>Polypropylene (PP)<br>Temperature Range:<br>-5°C to 80°C<br>High-impact Nylon (NY)<br>Temperature Range:<br>-20°C to 80°C<br><b>Metal Jaw :</b><br>Stainless Steel (SUS 304) | 128 mm<br>(5 in)  | Ø 2.3 mm<br>(0.1 in) | <b>PP:</b><br>≥15 kgf<br>(≥33.1 lbf)<br><b>NY:</b><br>≥18 kgf<br>(≥39.7 lbf) | 14 x 34 mm<br>(0.6 x 1.3 in) | <b>Serial no : 13</b><br><b>Barcode : 12</b> |
| <b>FSE8</b>  |  | 203 mm<br>(8 in)  |                      |  |                              |  |
| <b>FSE10</b> |  | 245 mm<br>(10 in) |                      |  |                              |  |
| <b>FSE12</b> |  | 301 mm<br>(12 in) |                      |  |                              |  |

**PACKAGING**

| Carton                | Quantit | Dimensions (mm)                          | Gross Weight (kg)               | Volume (m <sup>3</sup> ) | Standard Pastel / Solid Colours   |
|-----------------------|---------|--|---------------------------------|--------------------------|---|
| <b>FSE5</b><br>Inner  | 1000    | 279 x 225 x 190<br>(11.0 x 8.9 x 7.5 in) | 2.3 - 2.65<br>(5.1 - 5.8 lb)    | 0.012<br>(0.4 cu.ft.)    | <b>Polypropylene :</b><br>Body : WH PSYL PSOR PSRD PSBL PSNG<br>BK<br>Cap : TRNS WH MILKY (BIO)<br><b>Nylon :</b><br>Body : WH B YL G RD<br>BK<br>Cap : TRNS WH MILKY (BIO) |
| <b>FSE8</b><br>Inner  |         | 450 x 195 x 165<br>(17.7 x 7.7 x 6.5 in) | 2.61 - 3.17<br>(5.75 - 6.99 lb) | 0.014<br>(0.5 cu.ft.)    |   |
| <b>FSE10</b><br>Inner |         | 3.14 - 3.25<br>(6.92 - 7.17 lb)          |                                 |                          |   |
| <b>FSE12</b><br>Inner |         |  |                                 |                          |   |

For colour customisations, kindly contact us for further information.

**Updated Date : 18 June 2023**