

## INDICATIVE SEAL

# FORT CASH BAG SEAL (FCBS)

### Pull-Tight Seal

***Indicative seal paradigm for security and authentication.***

Fort Cash Bag Seal is a classic indicative seal with a flat strap for tight securing of assets. With a variety of options for strap lengths and a greater space for laser marking. The spikes on the back and the locking ribs on both sides of the seal give enhanced security, as well as clear evidence of tampering.

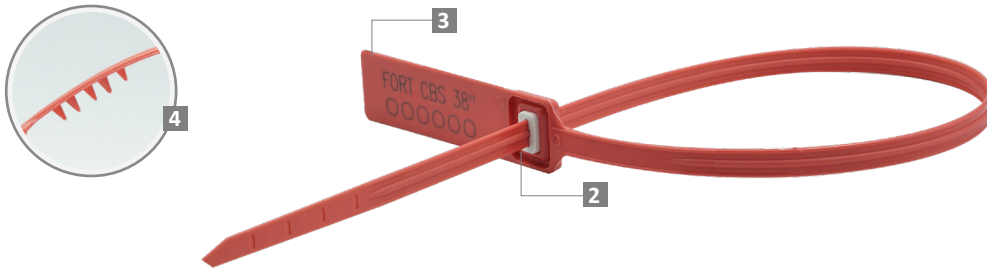
#### Applications:

- Pharmaceutical
- Petro-Chemical
- Retail Applications
- Postal Services
- Logistics
- Banking



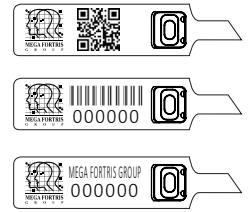
PREVENTION · PROTECTION · PEACE OF MIND



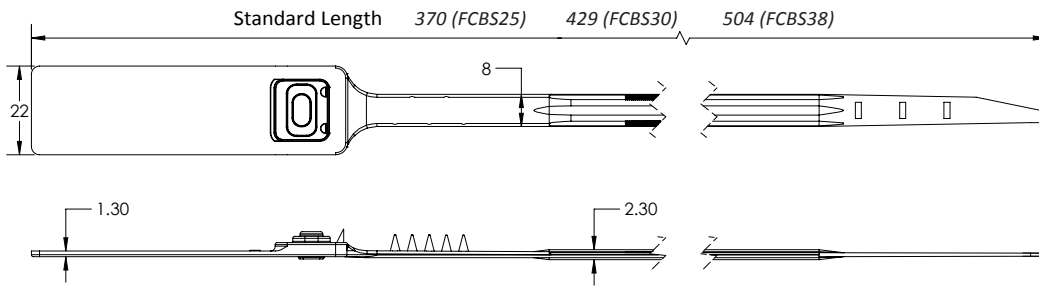


- 1 The Fort Cash Bag Seal is moulded with Polypropylene (PP) or high-impact Nylon (NY) material with the metal lock ultrasonically and heat staking encapsulated for greater security and clear evidence of tampering.
- 2 One-way locking mechanism is embedded for fast and easy application.
- 3 Spikes are placed behind the seal to provide better grip on the application surface.
- 4 Spikes are placed behind the seal to provide better gripping on the application surface.
- 5 Biodegradable additives for plastic material are available.
- 6 Different strap lengths are available to cater to different applications.

LASER MARKING OPTION



VIEW APPLICATION GIF



TECHNICAL SPECIFICATIONS

PRODUCT - FORT CASH BAG SEAL (FCBS)

Code	Material	Locking Length	Locking Size	Tensile Strength	Marking Area	Max Marking Digits
FCBS25	<b>Plastic :</b> Polypropylene (PP) <i>Temperature Range:</i> -5°C to 80°C <b>Metal Jaw :</b> Stainless Steel (SUS 304)	247 mm (10 in)	8.0 mm (0.3 in)	≥35 kgf (≥77.2 lbf)	14 x 34 mm (0.6 x 1.3 in)	<b>Serial no : 13</b> <b>Barcode : 12</b>
FCBS30		306 mm (12 in)				
FCBS38		380 mm (15 in)				

PACKAGING

Carton	Quantit	Dimensions (mm)	Gross Weight (kg)	Volume (m <sup>3</sup> )	Standard Pastel / Solid Colours
FCBS25 Inner	1000	568 x 235 x 210 (22.4 x 9.3 x 8.3 in)	6.16 (13.58 lb)	0.028 (0.99 cu.ft.)	<b>Polypropylene :</b> Body : WH PSYL PSOR PSRD PSBL PSGN Cap : TRNS WH MILKY (BIO) <b>Nylon :</b> Body : WH B YL G RD BK Cap : TRNS WH MILKY (BIO)
FCBS30 Inner			6.5 (14.3 lb)		
FCBS38 Inner		615 x 280 x 280 (24.2 x 11.0 x 11.0 in)	7.4 (16.3 lb)	0.048 (1.7 cu.ft.)	

For colour customisations, kindly contact us for further information.

Updated Date : 20 June 2023