



HIGH SECURITY SEAL

MF BAR

Barrier Seal

Strong, Angled Container Seal

MF Bar Seal complies to ISO 17712 and CTPAT and made of high-strength steel. The MF Bar's locking mechanism is embedded in the groove of the metal bush, making the seal stronger and more difficult to tamper with.

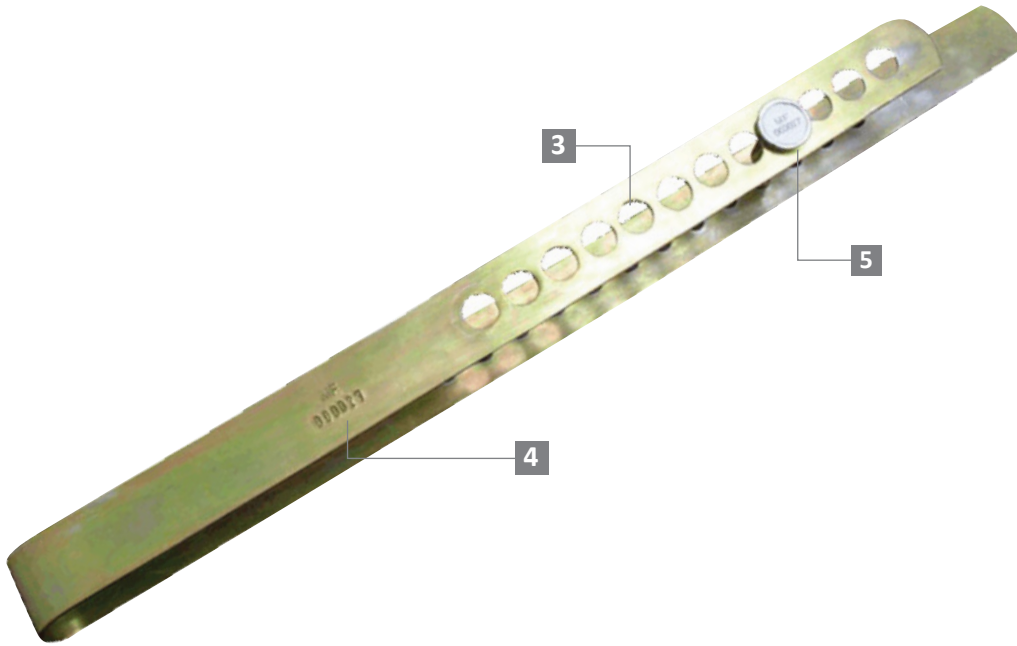
Typical applications of the MF Bar Seal include securing shipping and intermodal containers. It is also widely used for ground transportation.

Applications:

- Containers
- Trucks
- Trailers
- Rail Cars

PREVENTION · PROTECTION · PEACE OF MIND





- 1 The MF Bar is a strong, hardened bolt seal used to lock containers' central bars (2mm and 3mm) in securing the transportation of high-value goods.
- 2 This effectively works to deter tampering and illegal access into sealed containers and trucks.
- 3 There are a number of adjustable locking positions to allow for greater flexibility and precision when securing containers.
- 4 Identical sequential numbers on the bar and bolt seal provide greater security as this prevents parts substitution or replacement.
- 5 The locking bolt seal is made of high-strength steel for added security.
- 6 The seal is designed, tested and certified ISO 17712:2013.

TECHNICAL SPECIFICATIONS

**Customisable cable length upon request.*

PRODUCT - MF BAR SEAL

| Code | Material | Dimensions | Bolt Diameter | Tensile Strength | Marking Area | Max Marking Digits |
|--------------------|--------------------------------------|--|-----------------------|----------------------------|-------------------------------|----------------------|
| MF BAR SEAL | Body : High-strength Steel | Bar: 555.0 x 35.0 mm (21.6 x 1.38 in) Locking Bolt: 35 mm (1.38 in) | Ø 9.0 mm (0.32 in) | ≥ 1000 kgf (≥ 4629 lbf) | Pin: 15 mm (0.6 in) | Serial no : 8 |

PACKAGING

| Carton | Quantity | Dimensions (mm) | Gross Weight (kg) | Volume (m ³) |
|--------------|----------|--|-------------------|--------------------------|
| Inner | 25 sets | 570 x 220 x 160 (22.4 x 8.7 x 6.3 in) | 16 (35.27 lb) | 0.02 (0.709 cu.ft.) |

Carton size and weight vary according to cable length. Figures shown in the table are for the standard cable length packaging. Please contact us for additional details.

Updated Date : 20 June 2023