

SECURE

System : 3 phase 4 wire  
Voltage : 3 x 230/400V  
Current : 3 x 10 - 100A  
Frequency : 50Hz  
Test LED  
800 Pulses/Unit

kWh Cl. 1.0  
kVAh Cl. 2.0



**MEGA FORTRIS**  
G R O U P

## INDICATIVE SEAL

### MEGA TWISTER SP (MTW SP)

#### Application Seal

***Extensive range of designs for a variety of identifying purposes.***

The Mega Twister SP seal range consists of multiple identifier placement options to accommodate different requirements. Their simple locking mechanism makes the seals user-friendly and versatile for different applications. The seals are small in size and space-saving.

#### Applications:

- Utility Meters & Scales
- Chemical and Oil Refinery
- Transportation
- Banking

C1 O1 C2 O2 RS232

Mega Twister SP BC  
0000000

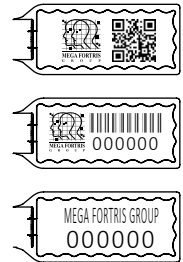


PREVENTION · PROTECTION · PEACE OF MIND





**LASER MARKING OPTION**

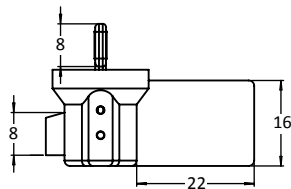


**VIEW APPLICATION GIF**

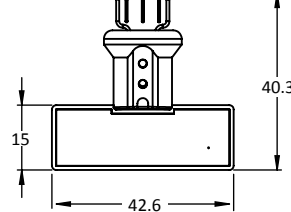


- 1 The Mega Twister SP seals are moulded with a twister locking insert and white cap ultrasonically and heat staking welded in a plastic transparent body for a clear view of the locking and evidence of tampering.
- 2 Stainless steel wire is required for the twister locking to achieve quick and tight securing of the seals.
- 3 The laser marking area of each design is placed differently with the options of horizontal area on the side (MTW SP), at the bottom (MTW SP BC), and vertical area at the bottom (MTW SP BCV).
- 4 The laser marking area is sufficient for irreversible essential identifiers such as name, logo, barcode (not applicable for MTWSP), serial number and QR code.
- 5 Colour coding is possible with a combination of clear plastic body and vibrant colour insert, which is available in a wide range of choices.
- 6 Special UV additives for the product's long-lasting performance are available. Biodegradable additives are also available.

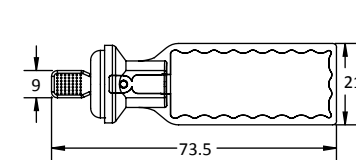
MTW SP



MTW SP BC



MTW SP BCV



**TECHNICAL SPECIFICATIONS**

PRODUCT - MEGA TWISTER SP (MTW SP)						
Code	Material	Locking Length	Locking Size	Tensile Strength	Marking Area	Max Marking Digits
MTW SP	<b>Plastic body:</b> Polycarbonate (PC) Temperature Range: -40°C to 85°C	250 mm (9.8 in)	Ø 0.8 mm (0.03 in)	>30 kgf (>66 lbf)	8 x 12 mm (0.31 x 0.5 in)	Serial no : 6
MTW SP BC	<b>Plastic insert:</b> Acetal Temperature Range: -40°C to 120°C				36 x 9.0 mm (1.4 x 0.4 in)	Serial no : 13 Barcode : 13
MTW SP BCV	<b>Cable:</b> Plastic-coated Stainless Steel 304 (SUS 304)				12 x 34 mm (0.5 x 1.3 in)	

**PACKAGING**

Carton	Quantit	Dimensions (mm)	Gross Weight (kg)	Volume (m <sup>3</sup> )	Standard Colours
MTW SP Inner	1000 Pre-cut wire	338 x 255 x 190 mm (13.3 x 10 x 7.5 in)	4.68 (10.3 lb)	0.016 (0.565 cu. ft.)	Body : <span style="border: 1px solid black; padding: 2px;">TRNS</span>
MTW SP BC Inner	500 Twisted wire <45cm	284 x 254 x 299 mm (11.2 x 10 x 11.8 in)	5.14 (11.3 lb)	0.022 (0.777 cu. ft.)	Cap : <span style="border: 1px solid black; padding: 2px;">WH</span>
MTW SP BCV Inner		568 x 235 x 180 mm (22.4 x 9.3 x 7.1 in)	6.54 (14.4 lb)	0.024 (0.848 cu. ft.)	Insert : <span style="border: 1px solid black; padding: 2px;">WH</span> <span style="border: 1px solid black; padding: 2px;">YL</span> <span style="border: 1px solid black; padding: 2px;">OR</span> <span style="border: 1px solid black; padding: 2px;">GN</span> <span style="border: 1px solid black; padding: 2px;">RD</span> <span style="border: 1px solid black; padding: 2px;">BL</span> <span style="border: 1px solid black; padding: 2px;">BK</span>

For colour customisations, kindly contact us for further information.

**Updated Date : 20 June 2023**