



MEGA FORTRIS
G R O U P

SECURITY SEAL

SP MINI CABLE LOCK 200 (SPMCL 200)

Pull-Tight Barrier Seal

Substantial surface and body for operation efficiency.

The SP Mini Cable Lock is ultrasonically welded with a coloured cover and white base plate. This feature allows for colour coding and ease of identification from afar. It is very user-friendly and highly tamper-evident to maximise security of assets.

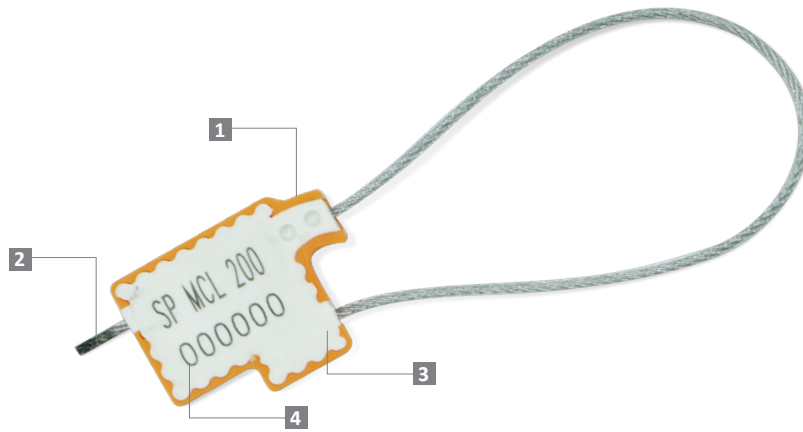
Applications:

- Valve Sealing
- Retail Applications
- Logistics
- Banking



PREVENTION · PROTECTION · PEACE OF MIND





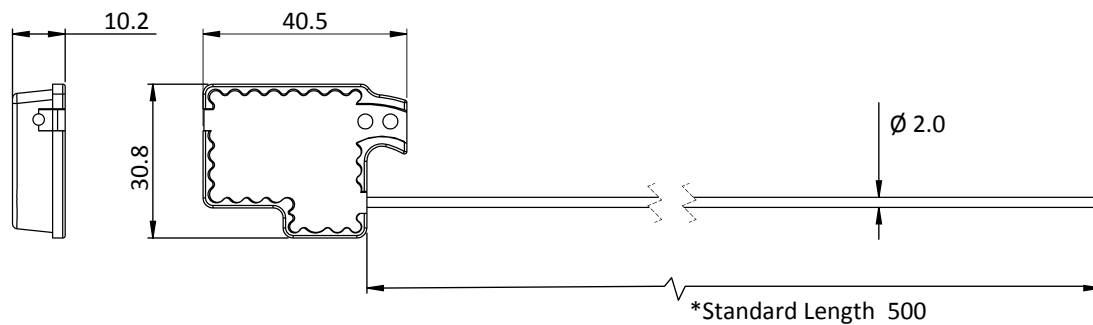
LASER MARKING OPTION



VIEW APPLICATION GIF



- 1 SP Mini Cable Lock is constructed with a tough shell of Polypropylene (PP) and aluminium locking mechanism for security requirements. Multiple colours are available to be ultrasonically welded to the white base plate.
- 2 One-way locking mechanism is embedded for fast and easy application.
- 3 Two colours on the body improved laser markings definition, visibility, and identification.
- 4 Irreversible identifiers such as name, logo, barcode, serial number and QR code are laser-marked on the body.
- 5 Biodegradable additives for plastic material are available.
- 6 Plastic material can withstand extreme weather conditions of -5°C to 80°C.



TECHNICAL SPECIFICATIONS

*Customisable cable length upon request.

PRODUCT - SP MINI CABLE LOCK 200 (SPMCL 200)

Code	Material	Cable Length	Cable Diameter	Tensile Strength	Marking Area	Max Marking Digits
SPMCL 200	Body : Polypropylene (PP) Cap : Polypropylene (PP) Locking Component: Aluminium Cable: Galvanised Steel Wire	500 mm (19.7 in)	∅ 2.0 mm (0.1 in)	≥150 kgf (≥330.7 lbf)	24 x 16 mm (0.9 x 0.6 in)	Serial no : 8 Barcode : 8

PACKAGING

Carton	Quantit	Dimensions (mm)	Gross Weight (kg)	Volume (m ³)	Standard Solid Colours
Inner	200	288 x 178 x 146 (11.3 x 7.0 x 5.7 in)	5.98 (13.2 lb)	0.007 (0.2 cu.ft.)	Body : WH BL YL GN OR RD BK

Carton size and weight vary according to cable length. Figures shown in the table are for the standard cable length packaging. Please contact us for additional details.

Marking flap : WH

For colour customisations, kindly contact us for further information.

Updated Date : 23 June 2022