



MEGA FORTRIS
G R O U P

INDICATIVE SEAL

TRIPLE TIGHT SP (TTSP) & TRIPLE TIGHT SP METAL (TTSPM)

Pull-Tight Seal

Flat-lay locking body design for extra security.

Triple Tight SP seal is a one-of-a-kind seal for its flat-lay locking body after sealing. The body and identifier are prevented from damage during rough handling as it settles close to the application surface. With the signature one-way locking mechanism, it is user-friendly to seal and remove.

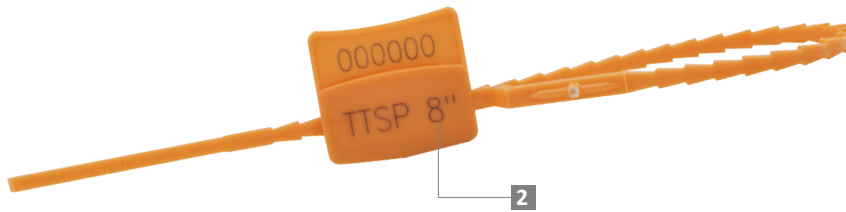
Applications:

- Retail Applications
- Postal Services
- Logistics
- Banking

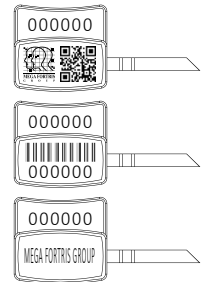


PREVENTION · PROTECTION · PEACE OF MIND



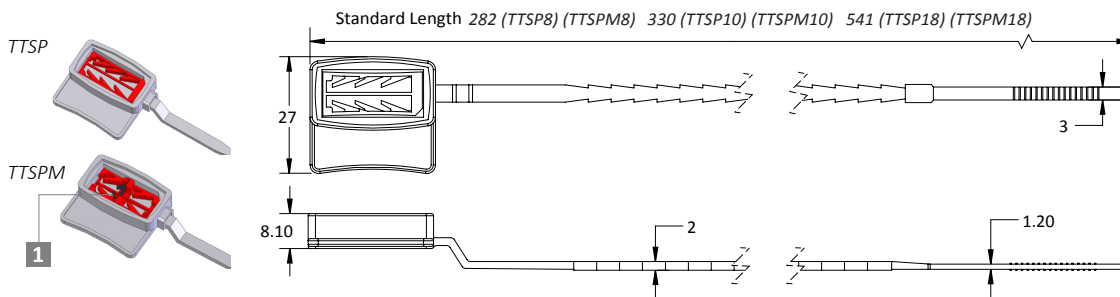


LASER MARKING OPTION



- 1 The Triple Tight SP is moulded with Polypropylene (PP) or Nylon (NY) material, and with the TTSPM, an optional metal lock is encapsulated for one-way locking mechanism and clear evidence of tampering.
- 2 Irreversible identifiers such as name, logo, barcode, serial number and QR code are laser-marked on the flap.
- 3 Biodegradable additives for plastic material are available.
- 4 Different strap lengths are available to cater to different applications.

VIEW APPLICATION GIF



TECHNICAL SPECIFICATIONS

PRODUCT - TRIPLE TIGHT SP (TTSP) & TRIPLE TIGHT SP METAL (TTSPM)

Code	Material	Locking Length	Locking Size	Tensile Strength	Marking Area	Max Marking Digits
TTSP8	Plastic : Polypropylene (PP) Temperature Range: -5°C to 80°C	200 mm (8 in)	4.0 mm (0.2 in)	>20 kgf (>44.1 lbf)	6 x 25 mm (0.2 x 1.0 in)	Serial no : 8 Barcode : 8
TTSP10		248 mm (10 in)				
TTSP18		460 mm (18 in)				
TTSPM8	Plastic : Polypropylene (PP) Temperature Range: -5°C to 80°C or Nylon (NY) Temperature Range: -20°C to 80°C	200 mm (8 in)	4.0 mm (0.2 in)	>20 kgf (>44.1 lbf)	6 x 25 mm (0.2 x 1.0 in)	Serial no : 8 Barcode : 8
TTSPM10		248 mm (10 in)				
TTSPM18		Metal Jaw : Stainless Steel (SUS 304)				

PACKAGING

Carton	Quantity	Dimensions (mm)	Gross Weight (kg)	Volume (m ³)	Standard Colours
TTSP / TTSPM8 Inner	1000	480 x 290 x 150 (18.9 x 11.4 x 5.9 in)	4.16 - 5.61 (9.17 - 12.4 lb)	0.021 (0.7 cu.ft.)	Body : WH, PSYL, PSOR, PSRD, PSBL, PSGN, BK, BL, YL, GN, OR, RD <i>Solid colour for NY material only</i> Insert : BK, BL, YL, GN, OR, RD Cap : WH, TRNS
TTSP / TTSPM10 Inner			10: 4 - 5.2 (22.9 - 11.5 lb)		
TTSP / TTSPM 18 Inner		615 x 280 x 280 (24.2 x 11.0 x 11.0 in)	5.9 - 6.8 (13.0 - 14.9 lb)	0.048 (1.7 cu.ft.)	

For colour customisations, kindly contact us for further information.

Updated Date : 17 August 2023